



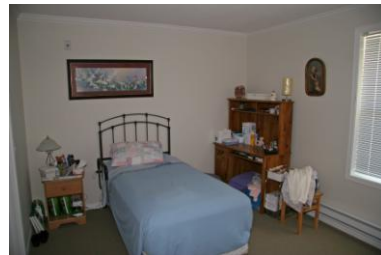
Thompson View Lodge

Box 318, 710 Elm Street

Ashcroft BC V0K 1A0

Phone: 250 453-0085

Email: tvlodge_cm@telus.net



The **Thompson View Lodge** is a 10-suite assisted living complex for seniors needing some support to be able to stay in their community with as much independence as possible. It adjoins the **Thompson View Manor** independent housing complex just below the **Ashcroft & District Health Site**. This facility is owned and operated by the **Thompson View Manor Society**.



The **BC Seniors Living Association (BCSLA)** has awarded the **Thompson View Lodge** with its highly prized **Seal of Approval** designation as of August 17, 2011. BCSLA launched its Seal of Approval program in November 2009, which assesses their member communities for the highest quality of standards within the Senior Living Communities. This Seal of Approval process is a self assessment and external review of five areas within a senior living community that assures the senior and their family the very best quality of services and care (www.bcsla.ca).

Your monthly rent includes:

- A private one bedroom apartment including kitchen appliances and a sit shower in the bathroom. Each apartment includes direct access outside with its own patio area.
- Hospitality services including weekly housekeeping, two "home cooked" meals plus snacks each day, and flat linen service.
- 24-hour emergency response: you will be provided with an emergency call pendant at no extra charge.
- Live Enrichment programs including social, recreational and therapeutic activities that are planned with your input.
- Personal care services as approved by the **Interior Health Authority (IHA)** and planned with your input

As an Assisted Living facility, application for residence must be made to the **Interior Health Authority** by directly contacting an **Ashcroft Home & Community Care Nurse** at the **Ashcroft Health Site** at **(250) 453-1939**. General information can be obtained by calling the Thompson View Lodge **Community Manager** at **(250) 453-0085** or the Thompson View Manor Society **General Manager** at **(250) 453-9223**.

Updated: December 7, 2011

