



WILDFIRE UPDATE

Elephant Hill Wildfire

Information Bulletin August 9, 2017

Fire Size: 117,170 hectares (estimated)

Status: 30 per cent contained

Resources: 462 firefighters, 26 helicopters, 105 pieces of heavy equipment, 86 support persons including a new BC Incident Management Team, 89 structural protection personnel are all supporting efforts on this fire.

Today was transition day for the Incident Management teams. Heather is leaving to take some much needed rest and she is being replaced by Noelle Kekula.

Progress to date:

The Clinton Fire camp is operational and the Cache Creek Fire Camp is being relocated to Big Sky (off of Hwy 1). Crews are preparing to do a burn out operation south of Young Lake, if weather permits. This burn out operation will help fortify the north flank of the fire from Clinton towards Young Lake. The north flank is approximately 12 km from Green Lake. Control lines continue to be constructed along the east flank from Skeetchestin north to Young Lake. The SE and SW flank have held above both Hwy 1 and Hwy 99. Crews continue building guard lines around the SW flank of the fire north of Hwy 99. Structural crews continue to support the BC Wildfire Service including along the Hwy 97 corridor, Loon Lake, Deadman Valley, Backvalley Road and Young Lake areas.



Progress made by the BC Wildfire Service on the North West flank of the Elephant Hill fire has resulted in the rescinding of the current Evacuation Order for properties along the Highway 97 corridor between Chasm and 70 Mile House. Although the Evacuation Order has been rescinded, an Evacuation Alert remains for these properties, and residents are reminded that they need to remain prepared to evacuate immediately if necessary due to changing fire conditions. The link to the package of information is available at www.tnrd.ca/content/general-information.

Please note that this is an active fire and the situation can change quickly. Check the BC Wildfire Service Wildfire of Notes website for updates. Information regarding evacuation orders/alerts is available at: tnrd.ca, cariboord.bc.ca and slrd.bc.ca

Please note that this is an active fire and the situation can change quickly. Check the BC Wildfire Service Wildfire of Notes website for updates. Information regarding evacuation orders/alerts is available at: tnrd.ca, cariboord.bc.ca and slrd.bc.ca

ADDITIONAL CONTACT INFORMATION:

Information Officer: Noelle Kekula (250) 319-4815 or noelle.kekula@gov.bc.ca



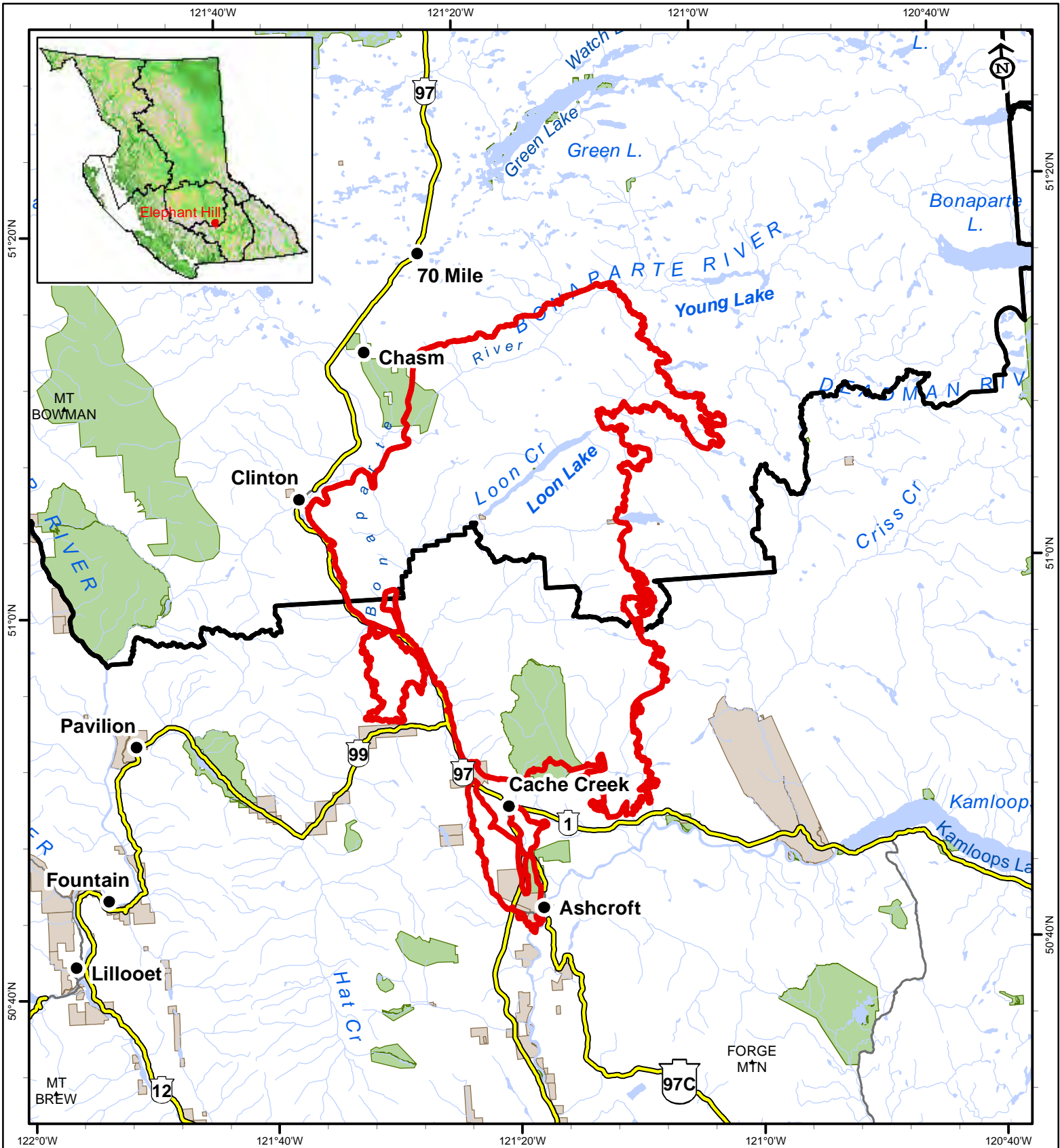
www.bcwildfire.ca



BC Forest Fire Info




@ BCGovFireInfo



**Elephant Hill
K20637
Public Information Map**

Perimeter Date: Aug 7, 2017
Perimeter Size: Approx: 117,170ha







0 5.5 11 16.5 22
Kilometers
1:500,000

 **BRITISH COLUMBIA**
www.gov.bc.ca

Ministry of Forests, Lands & Natural Resource Operations
BC Wildfire Service

Disclaimer:
This map is intended for general public information only. Best efforts have been made to provide the most accurate fire information at the time of creation of this map. However, fires are dynamic, and the information shown on the map may no longer reflect the most current fire situation. Accordingly, this map only should be used for reference purposes.

Fire perimeter information is influenced by visibility conditions. Information shown may not reflect the current fire situation. Not all areas within perimeter have been burned.

-  Fire Perimeter
-  Indian Reserve
-  Fire Centre
-  BC Park, Protected Area, Eco Reserve
-  Highway
-  Main Road